

QuickStart Guide

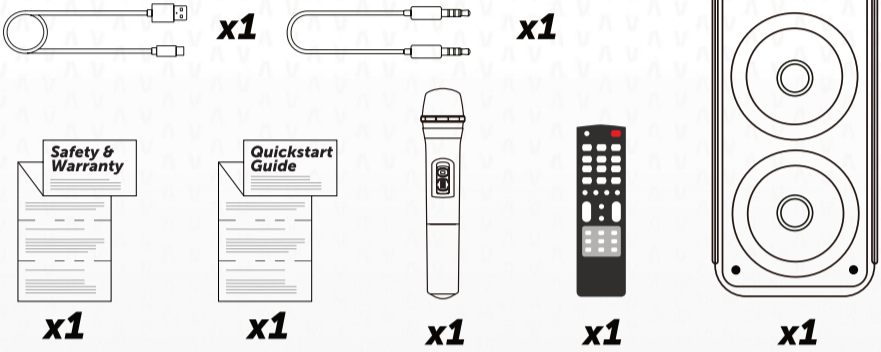
Guía rápida

Party 11 VM-HW350BK



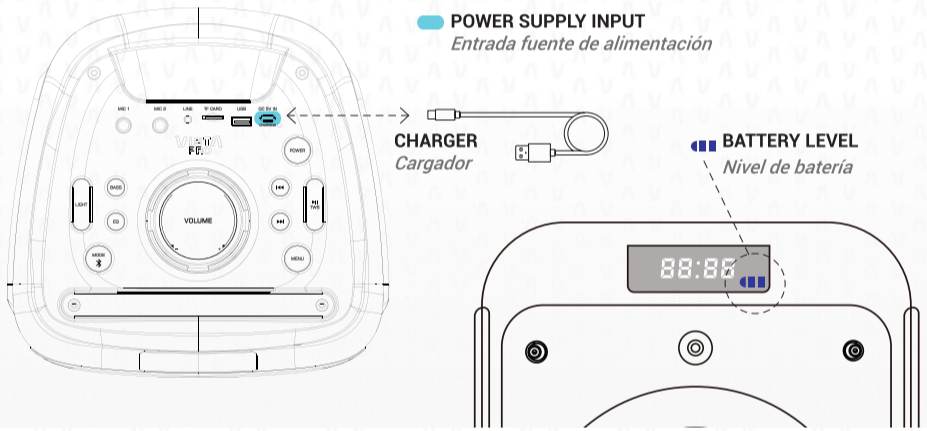
What's In The Box

Qué hay en la caja



Charge

Carga



Basic Use

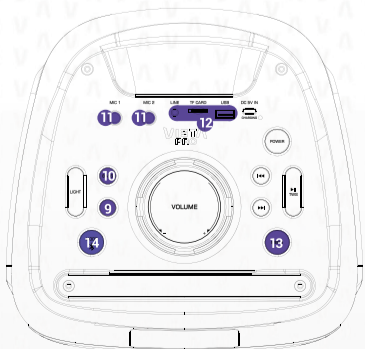
Uso Básico



- 1 ■ **TURN ON / TURN OFF**
Encender / Apagar
- 2 ● **SWITCH LIGHT MODE**
Cambiar Modo de Luz
- 3 ↻ **VOLUME UP**
Subir Volumen
- 4 ▾ **VOLUME DOWN**
Bajar Volumen
- 4 ● **BLUETOOTH MODE / LINE IN / FM RADIO / USB MODE**
Modo Bluetooth / Entrada de Línea / Radio FM / Modo USB
- 5 ■ **DISCONNECT BLUETOOTH DEVICE**
Desactivar la conexión Bluetooth
- 5 ● **PLAY / PAUSE**
Reproducir / Pausar
- 6 ● **NEXT TRACK**
Siguiente Pista
- 7 ● **PREVIOUS TRACK**
Pista Anterior
- 8 ■ **PHONE / TABLET SUPPORT**
Soporte de móvil o tablet

Pro Use

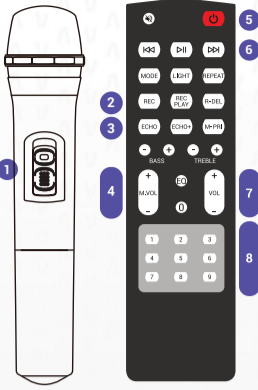
Uso Profesional



- 9 ● **CHANGE SOUND CURVE**
Cambiar Curva de Sonido
- 10 ● **BASS BOOST**
Aumento de Graves
- 11 ■ **2 MICROPHONE INPUTS**
2 Entradas para Micrófono
- 12 ■ **LINE IN INPUT | TF CARD INPUT | USB-A INPUT**
Entrada de Línea | Entrada Tarjeta SD | Entrada USB-A
- 13 ● **ADJUST TREBLE / BASS / MIC VOLUME / MIC ECHO**
Ajustar Agudos / Graves / Volumen del Micro / Eco
- 14 ■ **DISCONNECT BLUETOOTH DEVICES**
Desconectar Dispositivos Bluetooth

Remote Control

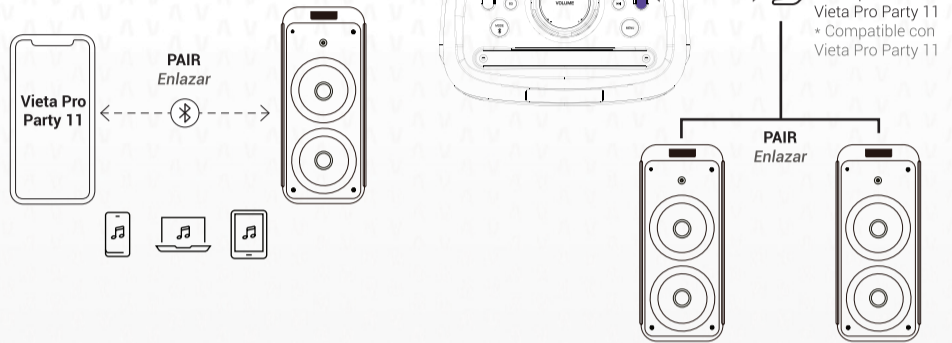
Mando a distancia



- 1 **MIC TURN ON / OFF**
Microfono encendido / apagado
- 2 **RECORDING WITH USB / TF / SD CARD**
Grabar con usb / tarjeta tf / sd
- 3 **MIC ECHO ADJUST**
Ajuste eco de micro
- 4 **MIC VOLUME**
Volumen del micro
- 5 **SPEAKER TURN OFF / ON**
Encender / Apagar
- 6 **MEDIA CONTROL**
Control Multimedia
- 7 **MASTER VOLUME**
Volumen Maestro
- 8 **NUM PAD. MEDIA SONG SELECT**
Panel numérico selector de canciones

TWS

True wireless Stereo



Tech Specs

ENG	
Bluetooth.	5.3
Transmission distance.	15 m.
TWS distance.	< 4 m.
Power Output.	150 W RMS.
Drivers.	6.5" + 6.5" + 2".
Frequency response.	20 Hz - 20 KHz.
Mic frequency.	267.3 MHz.
Mic Transmission Distance.	15 m.
Battery.	Li-Ion 74 V 5400 mAh.
Charge time.	6 - 8 h.
Power supply.	AC 100 - 240 V.
Power adapter.	No.
Play time.	10 h.
USB power.	5 W.
Inputs.	Mic TRS 1 & 2 / Line In 3.5 mm minijack / USB 2.0 / TF Card.
Size.	260 x 245 x 595 mm.
Weight.	5.71KG.

To prolong Battery Lifespan, fully charge at least once every 3 months. Battery life will vary due to usage patterns and environmental conditions. Do not expose the Vieta Pro product to liquids without removing all cable connections and close the cap tightly. Do not expose Vieta Pro product to water while charging. It may result in permanent damage to the speaker or product, and power source.

ESP	
Bluetooth.	5.3
Transmission distance.	15 m.
TWS distance.	< 4 m.
Power Output.	150 W RMS.
Drivers.	6.5" + 6.5" + 2".
Frequency response.	20 Hz - 20 KHz.
Mic frequency.	267.3 MHz.
Mic Transmission Distance.	15 m.
Battery.	Li-Ion 74 V 5400 mAh.
Charge time.	6 - 8 h.
Power supply.	AC 100 - 240 V.
Power adapter.	No.
Play time.	10 h.
USB power.	5 W.
Inputs.	Mic TRS 1 & 2 / Line In 3.5 mm minijack / USB 2.0 / TF Card.
Size.	260 x 245 x 595 mm.
Weight.	5.71KG.

Para prolongar la vida útil de la batería, cárguela por completo al menos una vez cada 3 meses. La duración de la batería variará según los patrones de uso y las condiciones ambientales. No exponga el producto Vieta Pro a líquidos sin quitar todas las conexiones de los cables y cerrar bien la tapa. No exponga el producto Vieta Pro al agua mientras se carga. Puede provocar daños permanentes en el altavoz o el producto y en la fuente de alimentación.

POR	
Bluetooth.	5.3
Transmission distance.	15 m.
TWS distance.	< 4 m.
Power Output.	150 W RMS.
Drivers.	6.5" + 6.5" + 2".
Frequency response.	20 Hz - 20 KHz.
Mic frequency.	267.3 MHz.
Mic Transmission Distance.	15 m.
Battery.	Li-Ion 74 V 5400 mAh.
Charge time.	6 - 8 h.
Power supply.	AC 100 - 240 V.
Power adapter.	No.
Play time.	10 h.
USB power.	5 W.
Inputs.	Mic TRS 1 & 2 / Line In 3.5 mm minijack / USB 2.0 / TF Card.
Size.	260 x 245 x 595 mm.
Weight.	5.71KG.

Para prolongar a vida útil da bateria, carregue-a totalmente pelo menos uma vez a cada 3 meses. A duração da bateria varia de acordo com os padrões de uso e as condições ambientais. Não exponha o produto Vieta Pro a líquidos sem remover todas as conexões dos fios e fechar a tampa com segurança. Não exponha o produto Vieta Pro à água durante o carregamento. Isso pode causar danos permanentes ao alto-falante ou ao produto e à fonte de alimentação.

DEU	
Bluetooth.	5.3
Transmission distance.	15 m.
TWS distance.	< 4 m.
Power Output.	150 W RMS.
Drivers.	6.5" + 6.5" + 2".
Frequency response.	20 Hz - 20 KHz.
Mic frequency.	267.3 MHz.
Mic Transmission Distance.	15 m.
Battery.	Li-Ion 74 V 5400 mAh.
Charge time.	6 - 8 h.
Power supply.	AC 100 - 240 V.
Power adapter.	No.
Play time.	10 h.
USB power.	5 W.
Inputs.	Mic TRS 1 & 2 / Line In 3.5 mm minijack / USB 2.0 / TF Card.
Size.	260 x 245 x 595 mm.
Weight.	5.71KG.

Um die Lebensdauer des Akkus zu verlängern, laden Sie ihn mindestens alle 3 Monate vollständig auf. Die Akkulaufzeit variiert je nach Nutzungsmuster und Umgebungsbedingungen. Setzen Sie das Vieta Pro-Produkt keinen Flüssigkeiten aus, ohne alle Kabelverbindungen zu entfernen und die Kappe fest zu verschließen. Setzen Sie das Vieta Pro-Produkt während des Ladevorgangs keinem Wasser aus. Dies kann zu dauerhaften Schäden am Lautsprecher oder Produkt sowie an der Stromquelle führen.

FRA	
Bluetooth.	5.3
Transmission distance.	15 m.
TWS distance.	< 4 m.
Power Output.	150 W RMS.
Drivers.	6.5" + 6.5" + 2".
Frequency response.	20 Hz - 20 KHz.
Mic frequency.	267.3 MHz.
Mic Transmission Distance.	15 m.
Battery.	Li-Ion 74 V 5400 mAh.
Charge time.	6 - 8 h.
Power supply.	AC 100 - 240 V.
Power adapter.	No.
Play time.	10 h.
USB power.	5 W.
Inputs.	Mic TRS 1 & 2 / Line In 3.5 mm minijack / USB 2.0 / TF Card.
Size.	260 x 245 x 595 mm.
Weight.	5.71KG.

Pour prolonger la durée de vie de la batterie, chargez-la complètement au moins une fois tous les 3 mois. La durée de vie de la batterie varie en fonction des habitudes d'utilisation et des conditions environnementales. N'exposez pas le produit Vieta Pro à des liquides sans avoir retiré toutes les connexions de câbles et fermé hermétiquement le capuchon. N'exposez pas le produit Vieta Pro à l'eau pendant le chargement. Cela peut entraîner des dommages permanents au haut-parleur ou au produit et à la source d'alimentation.

ITA	
Bluetooth.	5.3
Transmission distance.	15 m.
TWS distance.	< 4 m.
Power Output.	150 W RMS.
Drivers.	6.5" + 6.5" + 2".
Frequency response.	20 Hz - 20 KHz.
Mic frequency.	267.3 MHz.
Mic Transmission Distance.	15 m.
Battery.	Li-Ion 74 V 5400 mAh.
Charge time.	6 - 8 h.
Power supply.	AC 100 - 240 V.
Power adapter.	No.
Play time.	10 h.
USB power.	5 W.
Inputs.	Mic TRS 1 & 2 / Line In 3.5 mm minijack / USB 2.0 / TF Card.
Size.	260 x 245 x 595 mm.
Weight.	5.71KG.

Per prolungare la durata della batteria, ricaricare completamente almeno una volta ogni 3 mesi. La durata della batteria varia in base ai modelli di utilizzo e alle condizioni ambientali. Non esporre il prodotto Vieta Pro a liquidi senza rimuovere tutti i collegamenti dei cavi e chiudere bene il tappo. Non esporre il prodotto Vieta Pro all'acqua durante la ricarica. Ciò potrebbe causare danni permanenti all'altoparlante o al prodotto e alla fonte di alimentazione.



The Bluetooth® word mark and logo are registered trademarks owned by Bluetooth SIG, Inc. Compatible with Android and Apple. "Android" is a trademark of Google Inc. "Apple" is a trademark of Apple Inc.



Designed and engineered in SPAIN. Made in P.R.C.
Diseñado y desarrollado en España. Fabricado en P.R.C. Importado y distribuido en Europa por FRAMASON AUDIO S. A. VIETA® is a trademark of FRAMASON Audio, SA.

FRAMASON AUDIO S. A
C/ Tuset 5-11 | 2ªA | 08006 Barcelona, Spain.
www.vietapro.es

✉ Europe: service@vieta.es

